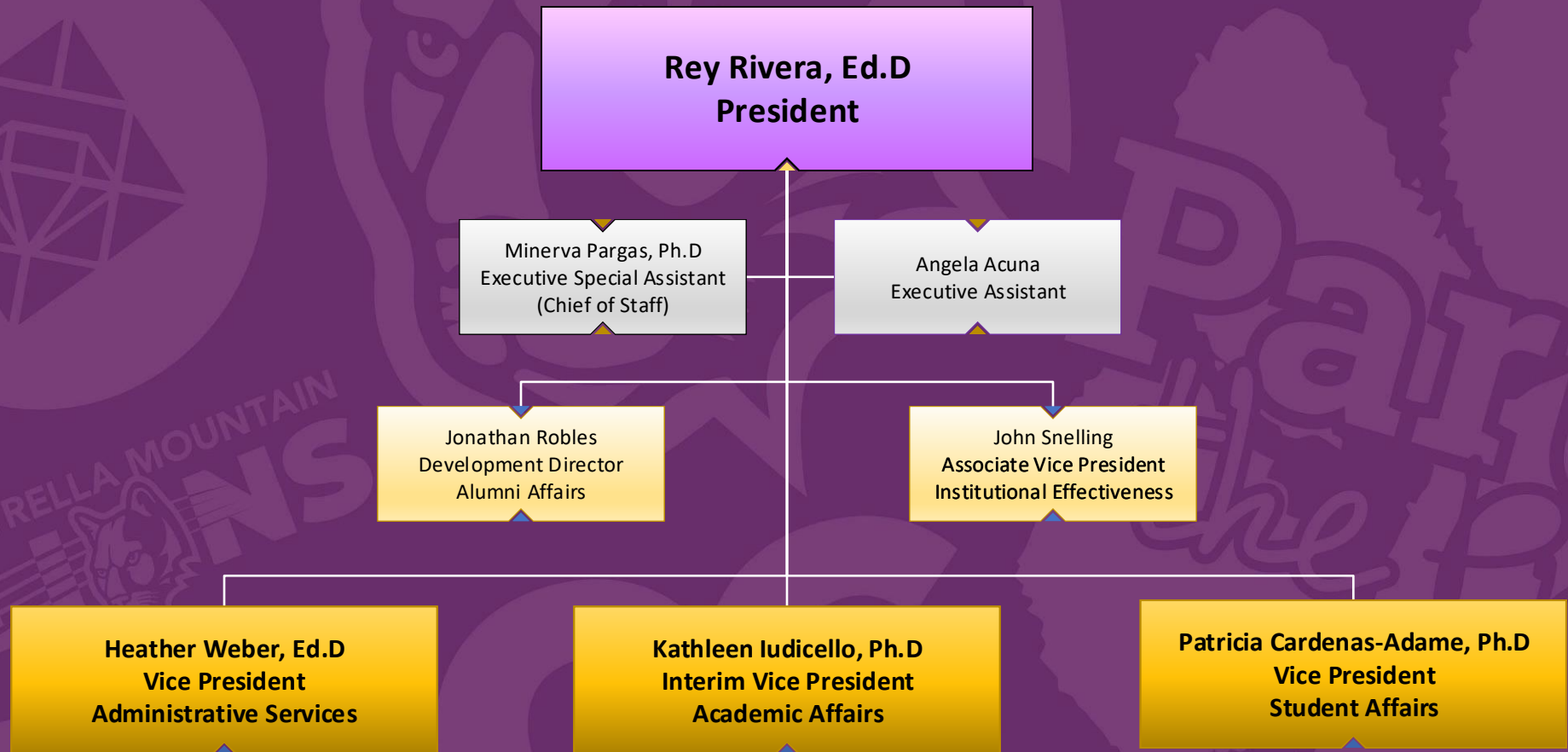


# Office of the President



# Development Office

Jonathan Robles  
Development Director  
Alumni Affairs

Debra Maihofer  
Program Analyst

Vacant  
Administrative Specialist Sr.



ESTRELLA MOUNTAIN  
COMMUNITY COLLEGE  
A MARICOPA COMMUNITY COLLEGE

[Back to Top](#)

# Institutional Effectiveness

**John Snelling**  
Associate Vice President  
Institutional Effectiveness

Sandy Hill  
Planning Research Analyst Sr.

James Waugh  
Planning Research Analyst Sr.

Jann Contento, Ph.D.  
Planning Research Analyst

Vacant  
Grants Officer Sr.

Barbara Ping  
Program Specialist



ESTRELLA MOUNTAIN  
COMMUNITY COLLEGE  
A MARICOPA COMMUNITY COLLEGE

[Back to Top](#)